



2107 West Blue Heron Blvd.  
 Riviera Beach, FL 33404  
 Phone: 561-845-2425  
 Toll Free: 800-327-6880  
 www.itwconsumer.com

# Tiger Patch® Muffler or Tailpipe Repair Tape

## Technical Data Sheet

Rev 08/09

**PRODUCT DESCRIPTION:** Simple wrap-around tape permanently seals cracks and holes in mufflers and tailpipes. It's the original, well-known Tiger Patch® brand. Tiger Patch® heat seals itself to become a permanent part of the muffler or tailpipe. No tools necessary, permanent, seals in minutes, and is mechanic approved.

**WORKS BEST ON:** Mufflers and tailpipes. Fast, easy and economical muffler/tailpipe tape will stop exhaust noise and seal out dangerous fumes. Use on conventional exhaust systems.

**PRODUCT FEATURES:**

- Color: Black
- Set Time: 20 minutes
- Temperature Range: up to 1900°F
- Chemical Solvent Resistance: automotive fluids and oils, road salt,
- Storage: Store in a cool, dry environment in sealed package.

**SURFACE PREPARATION: PROVIDE ADEQUATE VENTILATION. DO NOT APPLY WHILE MOTOR IS RUNNING!** Clean repair area thoroughly to remove any loose particles, mud or dirt.

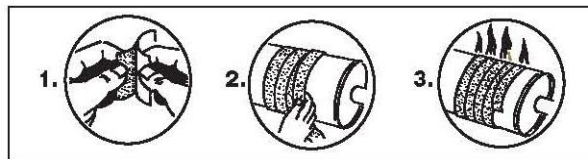
**REMOVAL METHODS:**

**After cure:** Once the Tiger Patch® has cured it cannot be removed without damaging muffler and/or tailpipe because it has heat sealed itself becoming a permanent part of the item it was installed on.

**HELPFUL HINTS:** Clean and dry surfaces thoroughly. When outside temperature is below 70°F, preheat by running motor until metal is quite warm to the touch. When outside temperature is over 70°F, preheating is not necessary.

Remove and discard the brown paper from tape and peel off and discard the red plastic backing from both sides of tape. If the Tiger Patch® is not tightly wrapped around the damaged area and secured at each end with wire or tape, the product could fail. The repair area should be fully covered by overlapping the Tiger Patch® material at least 1" over itself and insure that the repair area is fully covered. FOR HOT AREAS, place a piece of aluminum can or foil over hole before wrapping tape. Doing this will also give more support to the repair area.

The next step is to idle the motor or drive the vehicle for 20 minutes so that the heat will complete the repair by fusing the Tiger Patch® to your tailpipe.



**See MSDS for more complete information, safe handling instructions and first aid.**

Non-Regulated

Part Number: 00240, 00245, 00270, 00340



The technical data contained herein are intended as a reference only